

# West Shore Lake Pontchartrain

## Stakeholder Update

**February 24, 2021**

**Brad Drouant, PE, PMP**  
**Sr. Project Manager**  
**New Orleans District**  
**U.S. Army Corps of Engineers**



US Army Corps of Engineers  
**BUILDING STRONG®**



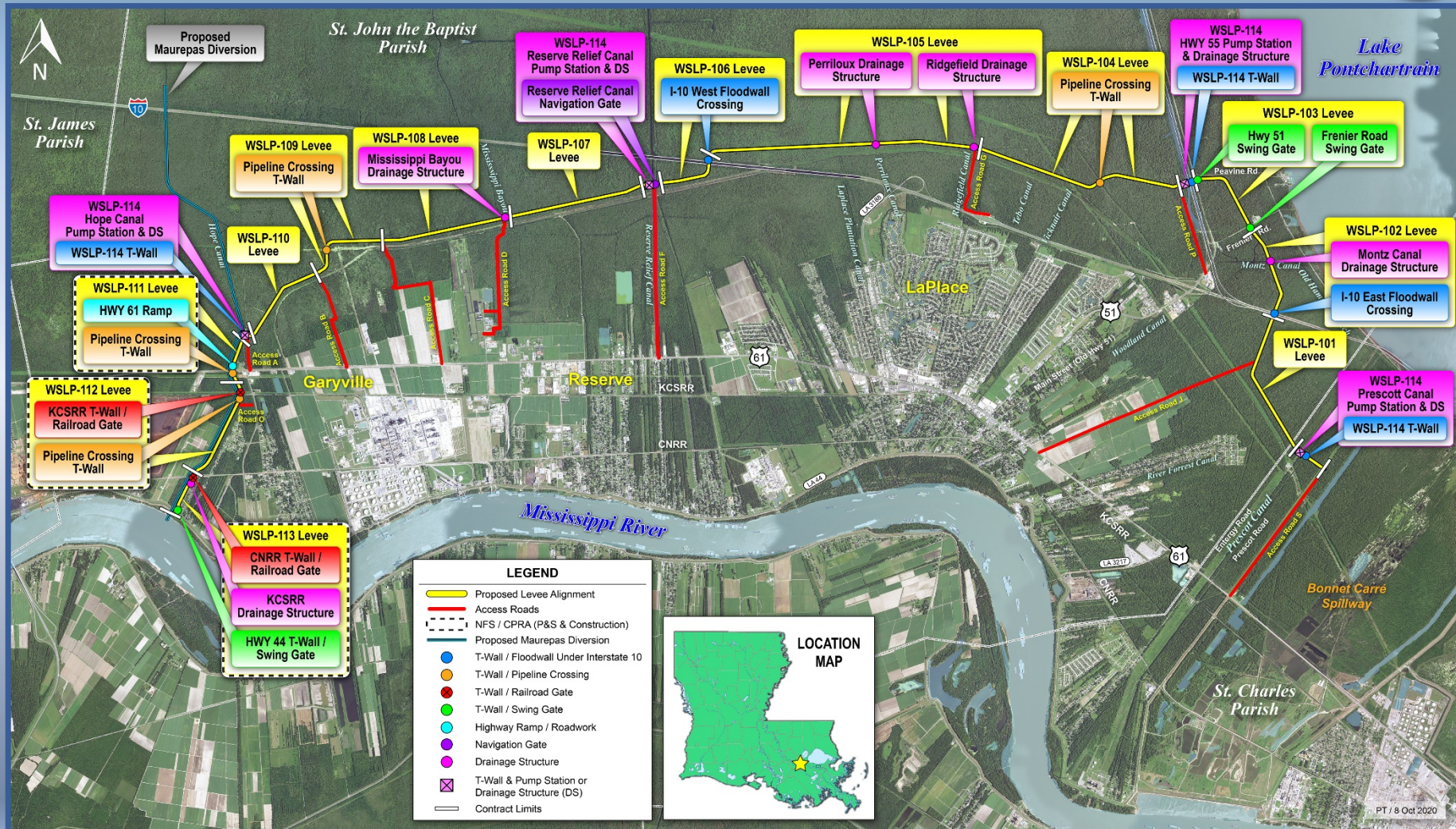
# Agenda

- Project Overview
- General Status
- Right-of-Entry
- Vegetation Clearing Contract
- Stockpile Contracts
- Pump Station Alternatives and Recommendation
- St. James Parish Update

# WEST SHORE LAKE PONTCHARTRAIN

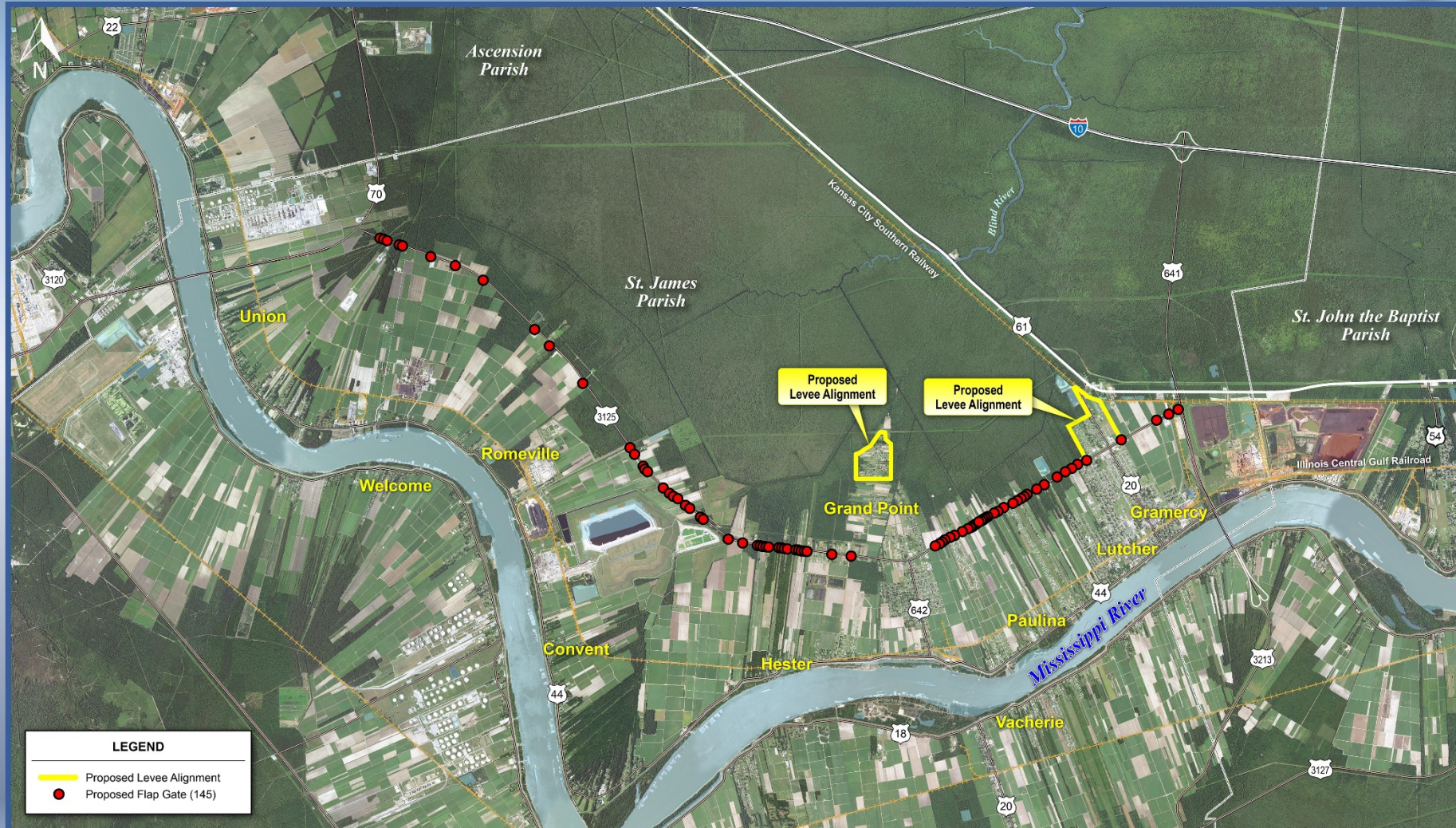
## *PROJECT OVERVIEW*

- Authorized as part of the Bipartisan Budget Act of 2018
  - ▶ Public Law 114-322; Section 1401(3)(5)
  - ▶ Authorized as a Hurricane and Storm Damage Risk Reduction System project
  - ▶ CPRA and Pontchartrain Levee District are the non-Federal Sponsors
  - ▶ Cost share – 65% Federal and 35% non-Federal
- **Project Description / Scope**
- Alignment is approximately 23 miles in length, consisting of 22.0 miles of levee and 1 mile of T-wall:
  - St. Charles Parish = 0.5 miles; St. John Parish = 18.0 miles; St. James Parish = 4.5 miles.
- The project includes 4 pump stations, 8 drainage structures, 3 gated road crossings, 2 railroad gates, approximately 35 utility relocations, 145 culvert valves / gates, and raising / floodproofing of a limited number of structures.
- 7.0 – 9.0 million cy of embankment material needed for levee construction.
- In excess of 1,000 acres of new right of way will need to be acquired.
- Habitat impacts will require compensation for approximately 1,090 AAHU's
- \$760M appropriation (includes real estate, design, construction, etc.)





# WSLP - St James Parish



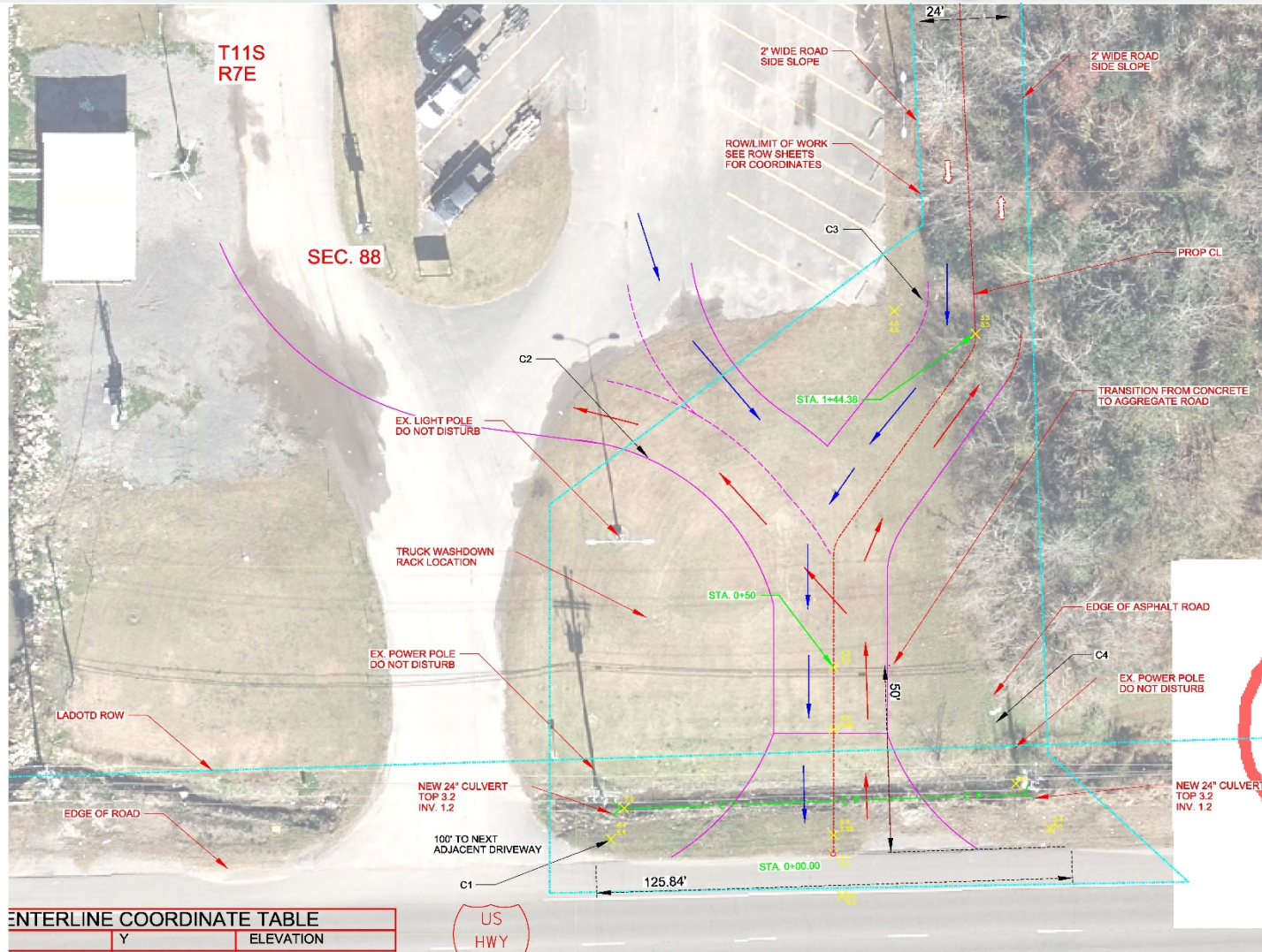
# General Status

- Levee construction reaches have been optimized to maximize construction access (shown on following page)
  - ▶ Currently have 13 levee contracts and 1 pump station contract
- Continue to coordinate with CPRA regarding design and construction of the west alignment and the State's Maurepas Diversion Project
  - ▶ **Have received 15% designs for three reaches being designed by CPRA**
  - ▶ Detailed designs underway for all Corps of Engineers designed reaches
  - ▶ Contracts currently scheduled to be advertised between March and November 2021
  - ▶ CPRA reaches scheduled to be advertised early 2022
  - ▶ Various design reviews on-going
- Real Estate efforts on-going
- Project Website: [www.mvn.usace.army.mil/About/Projects/West-Shore-Lake-Pontchartrain/](http://www.mvn.usace.army.mil/About/Projects/West-Shore-Lake-Pontchartrain/)
  - ▶ Google "West Shore Lake Pontchartrain"
- Virtual Public Meeting held on 21 Oct 2020
  - ▶ Live stream reached over 2,000 people
  - ▶ The video recording of the event has been viewed 820 times on Facebook since we published
  - ▶ The event audience came from LaPlace (34%), St. Francisville (18%), New Orleans (7%), Reserve (7%), and Baton Rouge (3%), other (31%).

# General Status (cont.)

- The Sand Stockpile contract was awarded on 17 Feb 21.
  - ▶ The contract was awarded to North Wind Construction Services out of Knoxville, TN for around \$7M.
  - ▶ The contract involves removing sand from the Bonnet Carre Spillway and hauling it to the stockpile area off Hwy. 61. The sand will be used to construct the base for the levees.
- WSLP-101:
  - ▶ Subsurface conditions are very poor in this reach. To ensure a successful and economically viable construction effort, construction of the full levee section will be delayed to accommodate a test section program to determine the best way to construct the levee foundation for the reaches east of I-55. P&S have been finalized for the test section and we hope to award a contract in late March or early April.
- Access Roads:
  - ▶ Access road designs have been coordinated with LaDOTD and their comments have been incorporated into the various designs.
  - ▶ Access Road F (Reserve Relief Boat Launch): LaDOTD is requiring only one access point that will be used by both construction vehicles and the general public. This will require construction of a new entrance just to the east of the current access point (see schematic on following page). This plan is being coordinated with LaDOTD.
- First Levee Reaches Scheduled for Construction
  - ▶ The 95% designs have been completed for WSLP-107, WSLP-109, and WSLP-110.
  - ▶ The final P&S should be complete on all 3 contracts within the next 2-3 months.
  - ▶ Pending receipt of right of way for construction, these contracts will be advertised for construction.

# Proposed Reserve Relief Canal Boat Launch Entrance Realignment



# Levee Borrow Requirements

- Currently estimating a need of about 7.0M – 9.0M cubic yards of levee material for construction
- Bonnet Carre' Spillway (BCS)
  - ▶ BCS currently has 3.5M CY readily available
  - ▶ Access issues due to high stages on Mississippi River
- Will continue to pursue additional Government Furnished borrow
- Contractor Furnished Borrow List used for levee construction in New Orleans not authorized to be used for the WSLP project
- WSLP approved to use commercially available borrow sources
  - ▶ Sources Sought issued to identify commercial borrow sources
  - ▶ Requirements to become a commercial borrow source were included in the Sources Sought solicitation
  - ▶ Sources Sought closed 5 Nov 2020. Comments provided to all applicants
  - ▶ Follow-up submittals by applicants due by 10 Feb 21
  - ▶ Pushing to have list of pre-approved commercial pits by early March

# WEST SHORE LAKE PONTCHARTRAIN

## TENTATIVE *DELIVERY PLAN*

Contract ID	Description	Acquisition Strategy	Scheduled Construction Complete Date	Estimated Contract Value
WSLP 101	Levee	Small Business	3Q 2023	\$25M - \$50M
WSLP 102	Levee, Floodwall, Drainage Structure(s)	Small Business	4Q 2022	\$25M - \$50M
WSLP 103	Levee, Floodwall, Flood Gate	Small Business	1Q 2023	\$15M - \$25M
WSLP 104	Levee, Floodwall, Utility Crossings	Small Business	3Q 2023	\$25M - \$50M
WSLP 105	Levee, Floodwall, Drainage Structure(s)	Small Business	2Q 2023	\$35M - \$55M
WSLP 106	Levee and Floodwall	Small Business	2Q 2023	\$15M - \$25M
WSLP 107	Levee, Floodwall, Drainage Structure(s)	Small Business	1Q 2023	\$15M - \$25M
WSLP 108	Levee	Small Business	1Q 2023	\$15M - \$25M
WSLP 109	Levee, Floodwall, Utility Crossings	Small Business	1Q 2023	\$5M - \$20M
WSLP 110	Levee	Small Business	1Q 2023	\$5M - \$20M
WSLP 111	Levee, Highway Ramp, Utility Crossings	Small Business	4Q 2022	\$20M - \$40M
WSLP 112	Levee, Rail Road Gate, Floodwall, Utility Crossings	Small Business	3Q 2023	\$5M - \$20M
WSLP 113	Levee, Floodwall, Rail Road Gate	Small Business	2Q 2023	\$5M - \$20M
WSLP 114	Pump Stations	Unrestricted/Best Value	3Q 2023	\$150M - \$250M

Note: Project requirements and schedule are subject to change as designs are refined and impacts identified.

# WEST SHORE LAKE PONTCHARTRAIN

## MISCELLANEOUS CONTRACTS

- Currently Plan to issue several smaller contracts for various pre-construction efforts
  - ▶ Stockpile contracts
    - Stockpile Contract #1 – Awarded Sep 2020, work on-going
    - Stockpile Contract #2 – awarded Dec 2019, work on-going
    - Sand Stockpile Contract – **Awarded 7 Feb 21**
  - ▶ **Access Road contract P&S are nearing completion.**
    - CPRA is working with utility owners on letters of no-objection
    - Access road construction is critical to allow to support construction of levee reaches
  - ▶ **Pile Load Test Contract**
    - Will be conducted at 4 separate locations
    - Right of way drawings are being finalized.

# Environmental Clearances

- Additional environmental clearances are required before construction can begin due to shift in portions of the levee alignment
- Supplemental Environmental Assessment for Construction is underway
  - ▶ Updating the project description
  - ▶ Updating project impacts
    - Direct/Indirect
- Public review ended on 23 Apr 20
  - ▶ Comments being compiled and responses prepared
- Environmental clearances complete
- Changes during detailed designs may require additional environmental clearances
  - ▶ Will not delay construction

# Real Estate/Right-of-Entry

- All ROE obtained for field investigations and the investigations are complete
- Right-of-Way for Construction Activities
  - ▶ ROW requests for construction of the entire project have been provided to NFS. Minor comments are being addressed
  - ▶ Surveys, ownerships and appraisals are underway
  - ▶ Right of entry for construction will be critical in our ability to award construction contracts
  - ▶ Revised ROE for the pile load test was sent on 19 Feb 21

# USACE Pump Station and Drainage Structure Recommendations

- Current Recommendations
  - ▶ Pump Stations
    - Hope Canal - 800 cfs
    - Reserve Canal - 2,000 cfs
    - I-55 - 2,000 cfs
    - Prescott Canal - 800 cfs
    - Total capacity 5,600 cfs (was only 2,150 cfs in feasibility study)
  - ▶ Drainage Structures
    - 25 total openings in 8 drainage structures
    - Increase of 13 openings
  - ▶ Interior Drainage Canal
    - 100 ft top width; 30 ft bottom width; 8 ft deep
- 65% review of P&S has been initiated

# St. James Parish

## General Status

- Currently authorized project consists of ring levees, flap valves on the culverts under Hwy 3125, flood proofing of a small number of structures
- Investigating an additional alternative to expand the ring levees and to eliminate the flap valves
- Risk analysis of the flap valves scheduled to begin in early March 2020 – no longer planning on conducting
- Value Engineering Study conducted week of 04 May 2020
  - ▶ Final report received, currently being reviewed by MVN-OC
- Current Status
  - ▶ A draft informational paper was prepared describing the feasibility study alternative and 3 alternatives (Hwy. 61 and two extended ring levee options)
  - ▶ BBA-18 projects are not eligible for reformulation (changes need to be within the Chief's Discretionary Authority)
  - ▶ An internal Corps meeting was held to discuss the alternatives. Based on current configuration of alternative plans they are not within the Chief's Discretionary Authority.
  - ▶ Our Planning Division is taking another look at the alternatives to see what changes might be needed before they could be recommended.
  - ▶ Alternative 1 is the only one that will be looked at further as it has the best chance.
  - ▶ Plans for the ring levees can move forward while this effort is underway.

# Questions

